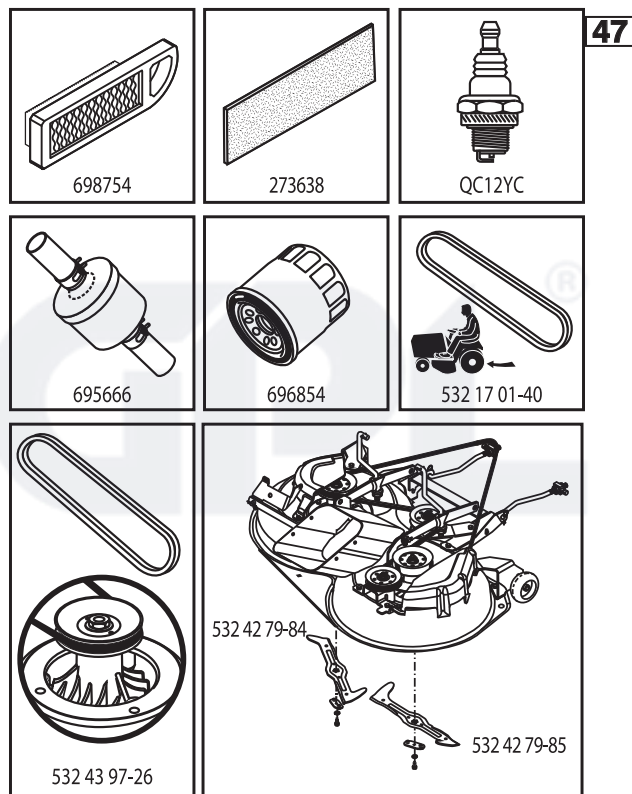


ILLUSTRATED PARTS LIST

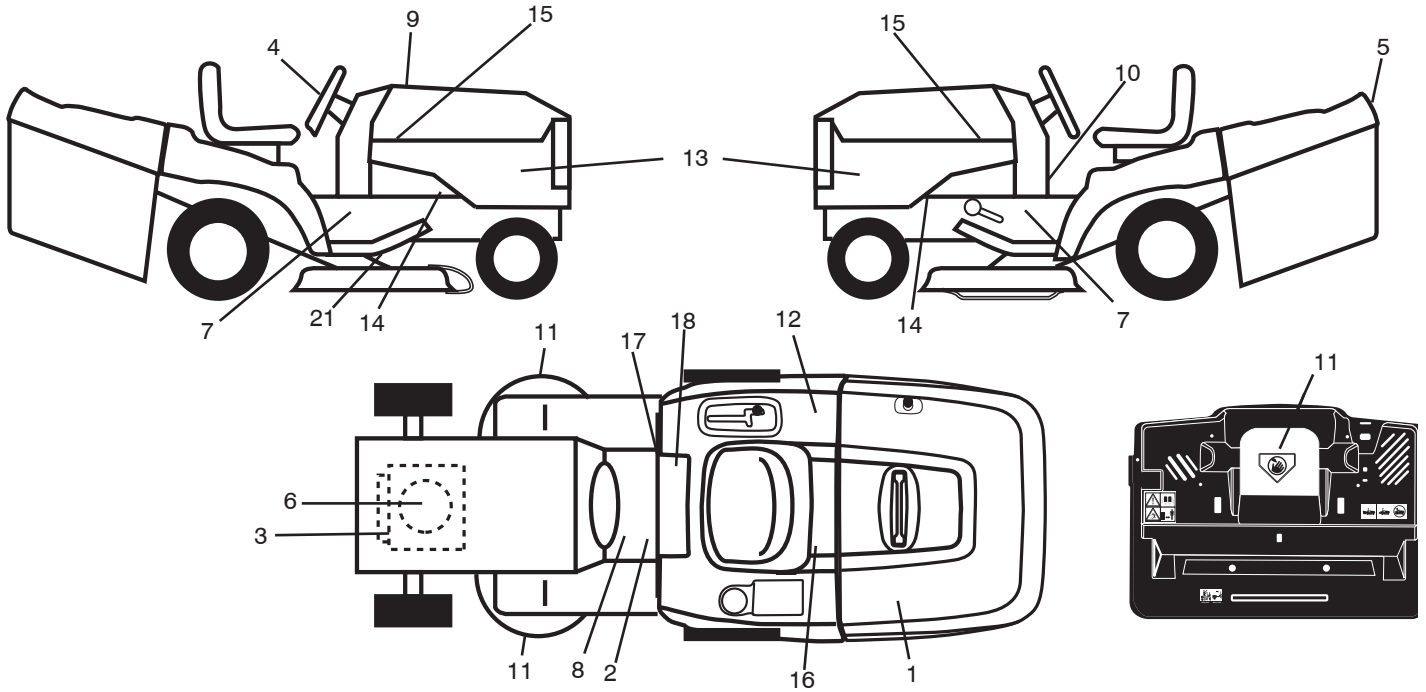
MODEL NO. 96051002200

CUSTOMER CATALOG NO. LT2316CMA2

PRODUCT NO. 960 51 00-22



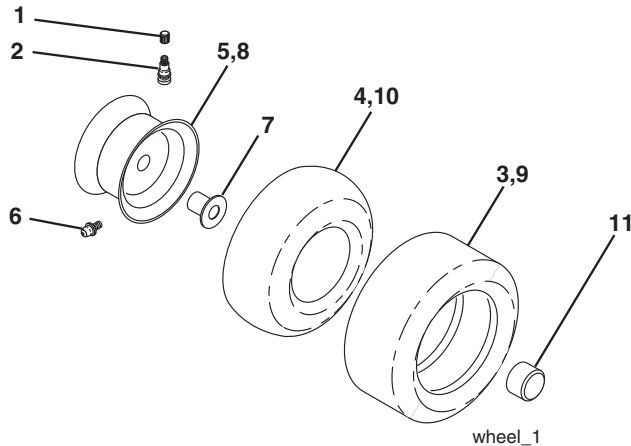
**TRACTOR - MODEL NO. LT2316CMA2 (96051002200), PRODUCT NO. 960 51 00-22
DECALS 27**



KEY NO.	PART NO.	DESCRIPTION
1	532 43 75-46	Decal Bag Super Vac
2	532 40 03-89	Decal Warning Symbols CE
3	532 43 74-85	Decal HP Engine
4	532 44 26-47	Decal Steering Wheel
5	532 43 74-43	Decal Fender Logo
6	532 19 68-41	Decal Warning Engine Symbols
7	532 40 11-46	Decal Warning Service/Fire
8	532 15 97-37	Decal Brake/Clutch Symbol
9	532 43 98-35	Decal Replacement
10	532 44 02-47	Decal Instruction Mlch/Bg
11	532 18 21-66	Decal Mower Cut Finger Symbol

KEY NO.	PART NO.	DESCRIPTION
12	532 18 04-32	Decal Fender 100 DB/CE
13	532 44 10-53	Decal Side Panel
14	532 15 97-36	Decal Chassis Hot Muffler
15	532 42 26-39	Decal Hood Logo
16	532 44 09-01	Decal Bypass
17	532 14 08-37	Decal Saddle Brake Parking
18	532 17 83-02	Decal Operator Cruise Sym
21	532 44 11-89	Decal V-Belt
--	532 42 59-76	Pad Footrest LH
--	532 42 59-86	Pad Footrest RH
--	532 44 20-32	Manual Operator's (Euro)

WHEELS & TIRES



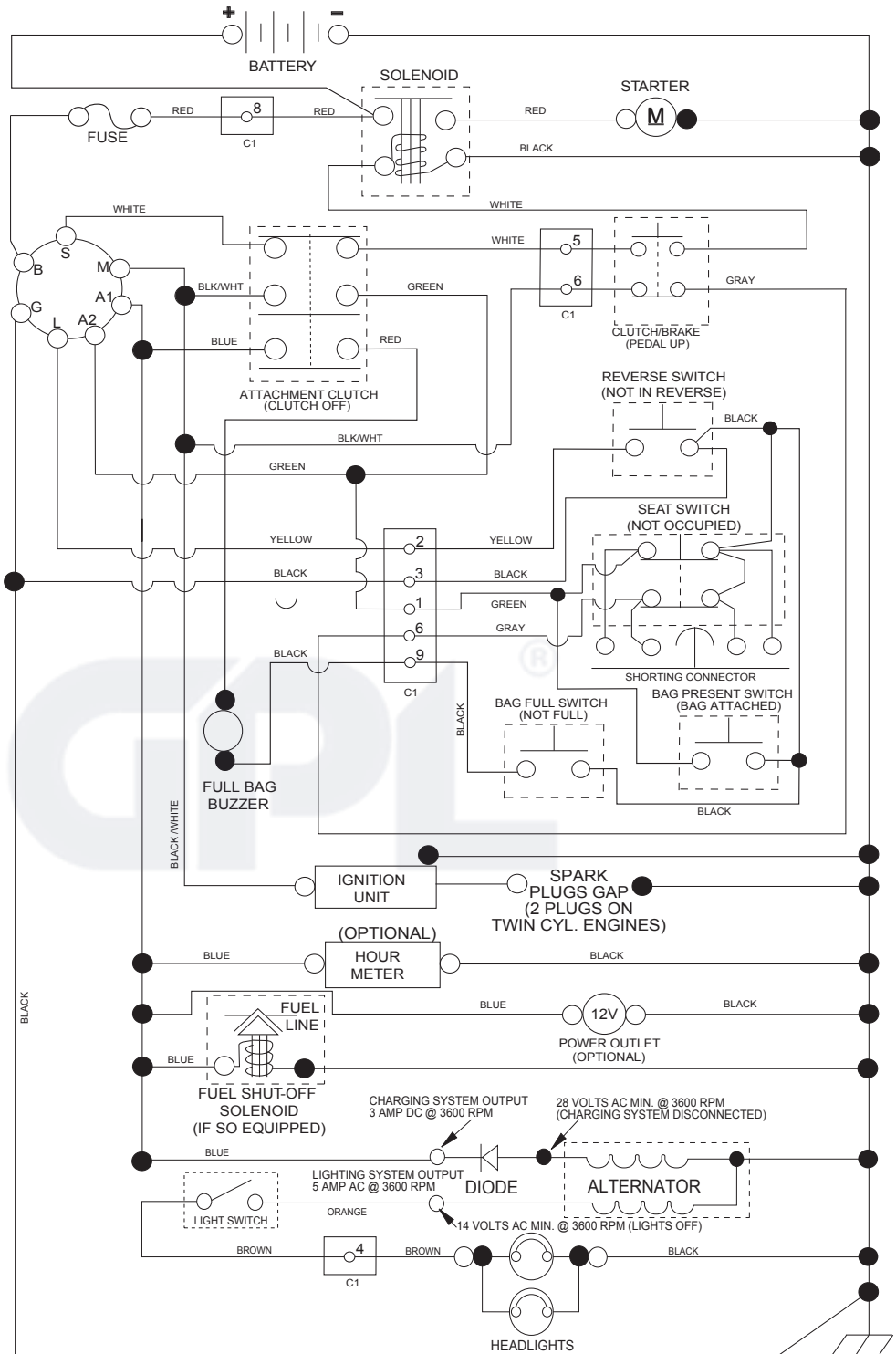
KEY NO.	PART NO.	DESCRIPTION
1	532 05 91-92	Cap Valve Tire
2	532 06 51-39	Stem Valve
3	532 10 62-22	Tire F Ts 15 x 6 0 - 6
4	532 05 99-04	Tube Inner Front #35060
5	532 13 83-36	Rim Asm. Front
6	532 12 49-57	Fitting Grease
7	532 12 49-59	Bearing Flange
8	532 13 83-37	Rim Asm. 8" Rear
9	532 42 05-31	Tire Rear 18 x 9.5-8 "Turf Saver LT"
10	532 12 49-26	Tube Rear 9 5 x 8
11	532 17 50-39	Cap Axle Blk. 1 50 x 1 00
--	532 14 43-34	Sealant, Tire (10 oz. tube)

NOTE: All component dimensions given in U.S. inches.
1 inch = 25.4 mm

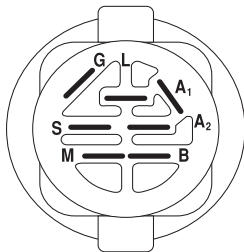
TRACTOR - MODEL NO. LT2316CMA2 (96051002200), PRODUCT NO. 960 51 00-22

SCHEMATIC **38**

SCH17

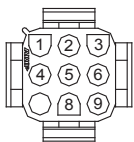


NOTE
YOUR TRACTOR IS EQUIPPED WITH A SPECIAL ALTERNATOR SYSTEM. THE LIGHTS ARE NOT CONNECTED TO THE BATTERY, BUT HAVE THEIR OWN ELECTRICAL SOURCE. BECAUSE OF THIS, THE BRIGHTNESS OF THE LIGHTS WILL CHANGE WITH ENGINE SPEED. AT IDLE THE LIGHTS WILL DIM. AS THE ENGINE SPEED IS INCREASED, THE LIGHTS WILL BECOME THEIR BRIGHTEST.

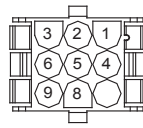


IGNITION SWITCH

POSITION	CIRCUIT	"MAKE"
OFF	M+G+A1	
RUN/OVERRIDE	B+A1	
RUN	B+A1	L+A2
START	B + S + A1	



CHASSIS HARNESS CONNECTOR (C1) (MATING SIDE)



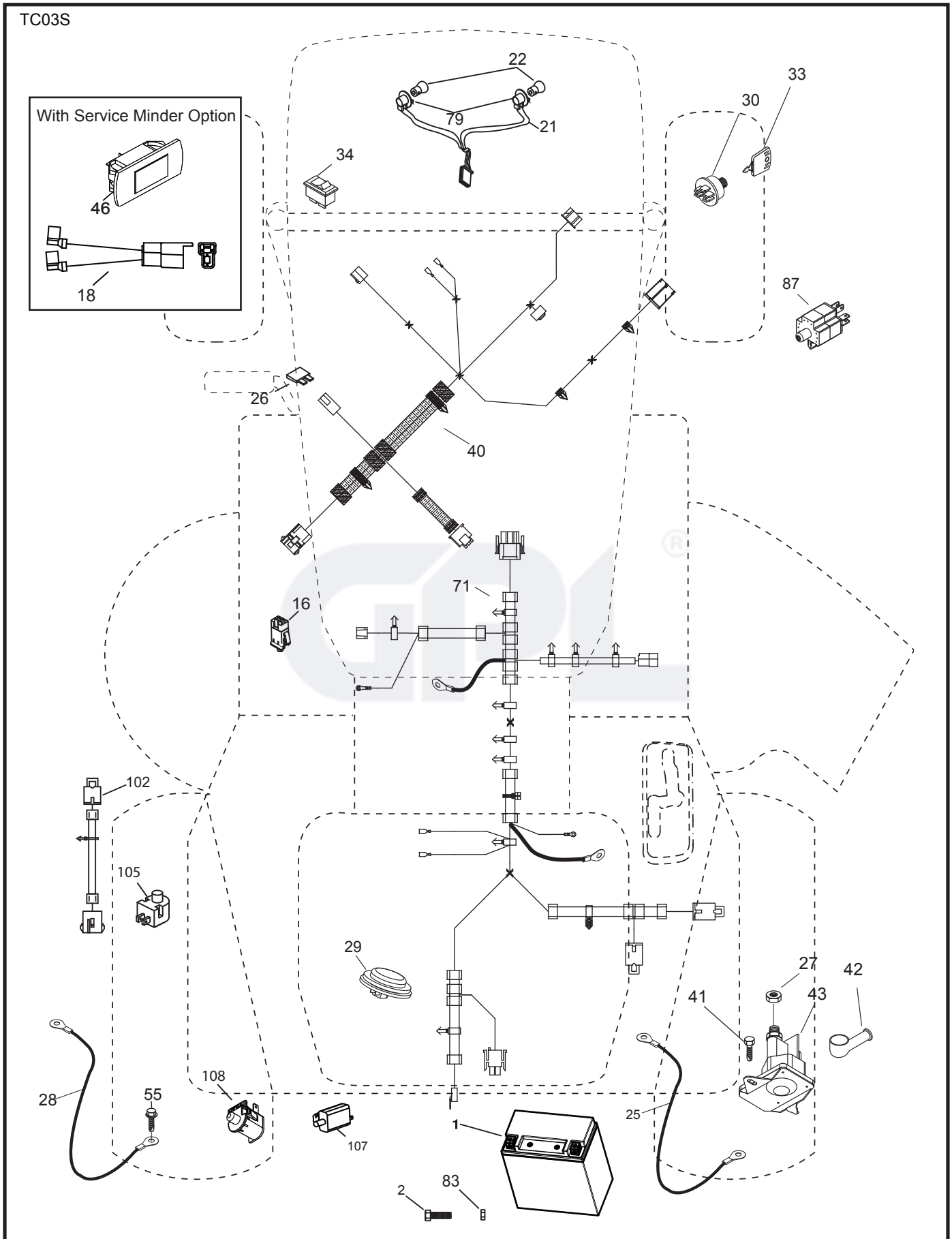
DASH HARNESS CONNECTOR (C1) (MATING SIDE)

WIRING INSULATED CLIPS
NOTE: IF WIRING INSULATED CLIPS WERE REMOVED FOR SERVICING OF UNIT, THEY SHOULD BE RE-INSTALLED TO PROPERLY SECURE YOUR WIRING.

●
NON-REMOVABLE CONNECTIONS

○
REMOVABLE CONNECTIONS

TRACTOR - MODEL NO. LT2316CMA2 (96051002200), PRODUCT NO. 960 51 00-22
ELECTRICAL **32**

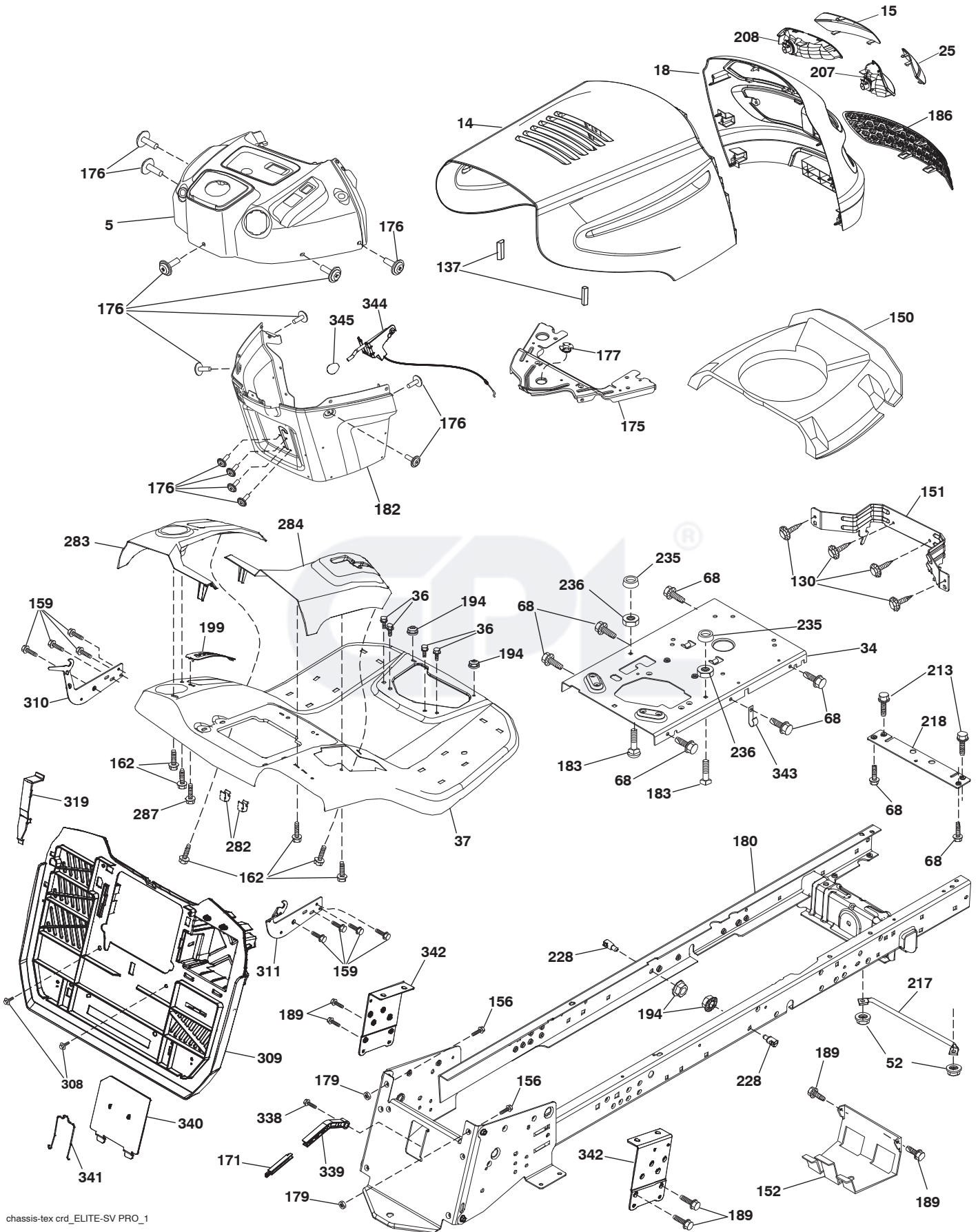


**TRACTOR - MODEL NO. LT2316CMA2 (96051002200), PRODUCT NO. 960 51 00-22
ELECTRICAL 32**

KEY NO.	PART NO.	DESCRIPTION
1	532 43 71-57	Battery
2	532 44 09-23	Screw Hex Head Cap M6 x 1.12mm
16	532 17 61-38	Switch Interlock Push-In
18	532 44 27-79	Harness Pigtail Service
21	532 18 37-59	Harness Socket Light w/4152J
22	532 00 41-52	Bulb Light
25	532 43 71-62	Cable Starter
26	532 17 51-58	Fuse
27	873 51 04-00	Nut Keps Hex 1/4-20 unc
28	532 43 71-63	Cable, Ground
29	532 40 15-45	Switch, Seat
30	532 19 33-50	Switch, Ign
33	532 41 19-35	Key/Chain
34	532 11 07-12	Switch Light/Reset
40	532 42 10-02	Harness Ign. Dash
41	817 72 04-08	Screw 1/4-20 x 1/2
42	532 13 15-63	Cover Terminal
43	532 19 25-07	Solenoid
46	532 40 17-63	Gauge Service Reminder
55	817 06 05-12	Screw Thdrol 5/16-18 x 3/4 TYTT
71	532 44 08-20	Harness Ign. Chassis
79	532 17 52-42	Socket Asm. Bulb
83	532 43 67-74	Nut Square M6 x 1 x 8.5 x 11mm
87	532 42 10-60	Switch Railmount NO-NC-NC
102	532 44 12-62	Harness Jumper
105	532 40 75-68	Switch Reverse
107	532 18 03-79	Switch Full Bagger Indicator
108	532 42 10-62	Switch Snapmount NC

NOTE: All component dimensions given in U.S. inches
1 inch = 25.4 mm

**TRACTOR - MODEL NO. LT2316CMA2 (96051002200), PRODUCT NO. 960 51 00-22
CHASSIS AND ENCLOSURES 39**



chassis-tex_crd_ELITE-SV PRO_1

**TRACTOR - MODEL NO. LT2316CMA2 (96051002200), PRODUCT NO. 960 51 00-22
CHASSIS AND ENCLOSURES 39**

KEY NO.	PART NO.	DESCRIPTION	KEY NO.	PART NO.	DESCRIPTION
5	532 43 52-48	Dash	207	532 18 38-33	Bezel RH
14	532 44 28-82	Hood	208	532 18 38-32	Bezel LH
15	532 18 97-54	Lens LH	213	874 76 05-12	Bolt 5/16-18 x 3/4
18	532 44 19-45	Grille	217	532 40 91-67	Rod Pivot Hood
25	532 18 97-55	Lens RH	218	532 19 63-95	X-Piece Hood Stop
34	532 19 61-25	Plate Engine	228	532 19 51-61	Stud Fastener
36	817 06 05-12	Screw 5/16-18 x 3/4	235	532 40 61-29	Spacer Fender
37	532 44 22-31	Fender	236	873 93 05-00	Nut Lock 5/16-18 unc
52	873 80 05-00	Nut Lock Hx w/Ins 5/16-18 unc PL	282	532 41 41-10	Clip Retainer
68	817 49 05-08	Screw Thdrol. 5/16-18 x 1/2	283	532 44 03-61	Console Deck Lift
130	532 41 63-58	Screw #10 x 0.750 BOS Thread	284	532 44 03-60	Console Shift
137	532 18 49-21	Bumper Hood	287	817 60 04-06	Screw Hex Washhead 1/4-20 x 3/8
150	532 18 43-22	Air Duct	308	532 17 18-77	Bolt 5/16-18 unc x 3/4
151	532 40 78-07	Bracket Pivot Hood	309	532 43 66-26	Backplate Bagger
152	532 19 95-35	Shield Browning	310	532 44 66-36	Bracket Hangar Bag LH
156	872 14 06-14	Bolt Rdhd Sqd 3/8-16 unc x 1-3/4	311	532 44 66-37	Bracket Hangar Bag RH
159	817 00 06-12	Screw Kexwsh Thdr 3/8-16 x 3/4	319	532 17 46-62	Bracket Actuator
162	532 14 24-32	Screw Hex Wsh. Hi-Lo 1/4 x 1/2 unc	338	532 43 66-40	Bolt Shoulder 5/16-18 x .88
171	532 44 12-89	Extension Bagger Full Lever	339	532 44 12-88	Full Bagger Lever
175	532 19 32-43	Crossmember	340	532 44 09-31	Door Battery
176	532 40 07-76	Screw 10-24 x 5/8	341	532 43 66-38	Latch Battery Door
177	532 19 52-28	Bushing Steering	342	532 43 59-38	Support Fender
179	532 16 89-37	Nut Push	343	532 44 07-49	Clip
180	532 43 54-72	Chassis	344	532 43 89-70	Control EZ Mulch
182	532 43 93-26	Dash Lower	345	532 44 06-39	Knob
183	874 52 05-20	Bolt 5/16-18 x 1-1/4			
186	532 18 97-53	Insert Grille			
189	817 00 05-12	Screw 5/16-18 x 3/4			
194	873 90 05-00	Nut Lock Hex Flange 5/16-18			
199	532 41 87-39	Plate Deck Lift			

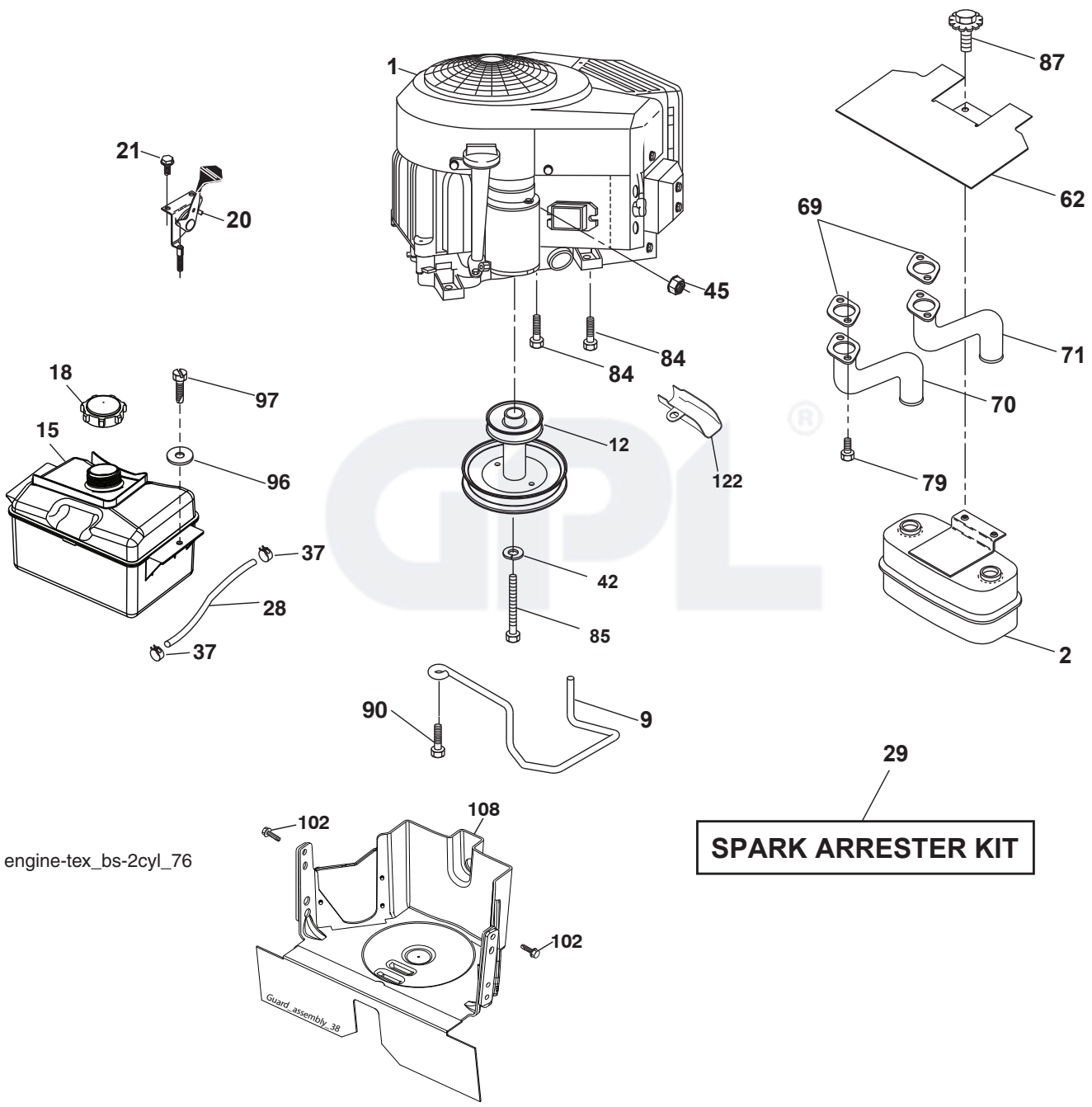
NOTE: All component dimensions given in U.S. inches
1 inch = 25.4 mm

**TRACTOR - MODEL NO. LT2316CMA2 (96051002200), PRODUCT NO. 960 51 00-22
DRIVE **40****

KEY NO.	PART NO.	DESCRIPTION	KEY NO.	PART NO.	DESCRIPTION
1	-----	Transaxle, TUFFTORQ K46DF (436814)(Order parts from transaxle manufacturer.)	186	532 19 43-21	Spacer Retainer
2	532 12 35-83	Key Square	188	532 19 43-23	Link Clutch Ground Drive
6	532 12 40-28	Bushing	189	532 43 36-11	Bellcrank GRND DR CRD
15	819 13 16-16	Washer 13/32 x 1 x 16 Ga.	195	532 43 58-65	Bracket Brake Rod
17	532 43 62-27	Spring, Brake	201	532 16 96-12	Bolt Shoulder 5/16-18
29	532 43 58-81	Rod, Brake	203	819 11 11-16	Washer 11/32 x 11/16 x 16 Ga.
33	812 00 00-01	Ring E	205	532 12 17-48	Washer 25/32 x 1-5/8 16 Ga.
35	532 19 77-22	Rod, Brake, Park	210	532 40 09-80	Rocker Asm. Pedal
37	532 12 17-49	Washer 25/32 x 1-1/4 x 16 Ga.	211	532 12 01-83	Bearing Nylon
38	532 16 96-13	Nyliner Snap-In 5/8	214	532 42 12-63	Pedal Forward Pads
42	532 12 48-72	Cover, Foot Pedal	215	532 41 94-82	Pad Pedal Reverse
49	872 11 06-14	Bolt 3/8-16 unc	221	532 40 31-87	Retainer Spring
50	532 19 43-27	Idler Flat	222	879 21 20-10	Washer 21/32 x 1-1/4
51	873 90 06-00	Lock Nut 3/8-16	226	532 40 15-64	Bracket Mount Torque
52	532 19 43-26	Idler V-Groove	227	817 49 05-12	Screw Thdrol 5/16-18 x 3/4
56	532 17 01-40	V-Belt, Drive	280	819 11 10-12	Washer 11/32 x 5/8 x 12 Ga.
61	532 43 77-88	Pulley Transaxle	309	532 16 55-81	Plate FSTNR Crossshift
64	532 19 78-65	Shaft Asm. Pedal Brake Control	311	532 16 98-45	Washer Nylon
73	874 49 05-56	Bolt Flanged	312	532 16 56-14	Hub Tapered Round CRD
90	532 44 36-05	Keeper Belt Clutching	313	874 78 04-16	Bolt Hex Fin 1/4-20 x 1
93	532 43 72-62	Link Shift	314	532 44 47-13	Retainer, Belt
99	532 44 39-47	Rod Bypass TEX CRD	315	817 58 05-20	Screw Thdrol 5/16-18 x 4.25
103	873 35 05-00	Nut	319	532 43 67-94	Spacer Transaxle Tex CRD
116	873 90 05-00	Nut Lock Hex Flange 5/16-18	320	532 18 76-90	Washer Spacer
125	817 00 05-12	Screw 5/16-18 x 3/4	335	532 19 95-34	Pulley V-Idler GRND DR
140	810 04 04-00	Washer Lock Hvy. Helical 1/4	339	532 43 68-67	Strap Torue K46 CRD Tex
143	817 49 05-08	Screw Thdrol 5/16-18 x 1/2 TYTT	351	532 43 69-98	Bracket 97 CRD Deck Sway
159	876 02 04-12	Pin Cotter 1/8 x 3/4	352	532 43 58-19	Bracket Idler
160	532 16 94-84	Retainer Clip	353	532 43 65-77	Bracket Idler RH
161	532 10 57-09	Spring, Return, Clutch	355	532 43 56-69	Strap Torque K46 CRD
163	532 43 66-32	Rod Control Shift Pedal	362	532 43 68-12	Idler Flat
166	532 42 91-64	Nut Push .625	364	532 44 30-32	Bracket Idler
167	532 40 52-57	Latch Brake Parking			
175	532 42 93-59	Shaft Asm. Crossshift			
183	532 13 70-57	Spacer Axle			
184	532 44 15-04	Handle Parking Brake			
185	872 11 06-22	Bolt 3/8-16 unc x 2-3/4			

* Parts supplied by manufacturer

NOTE: All component dimensions given in U.S. inches
1 inch = 25.4 mm



engine-tex_bs-2cyl_76

**TRACTOR - MODEL NO. LT2316CMA2 (96051002200), PRODUCT NO. 960 51 00-22
ENGINE 24**

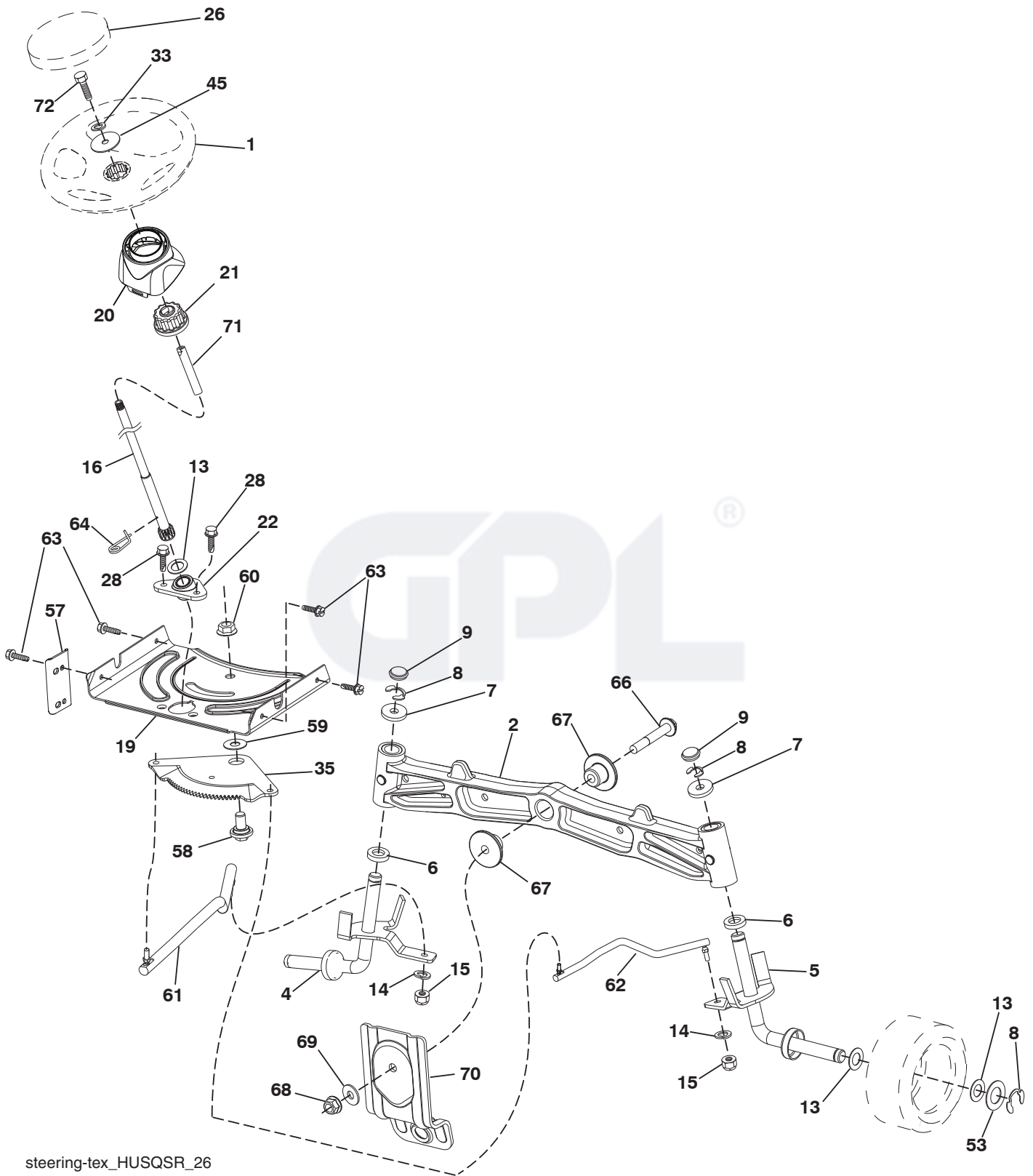
KEY NO.	PART NO.	DESCRIPTION
1	— — — — —	Engine B&S Model No. 401577-2219-B1 (438701)(Order parts from engine manufacturer.)
2	532 14 97-23	Muffler
9	532 19 43-20	Keeper Belt Engine
12	532 40 54-71	Pulley Engine
15	532 40 75-45	Tank Fuel 1.5
18	532 43 02-20	Cap Fuel
20	532 42 35-02	Control Throttle/Choke
21	532 41 63-58	Screw #10 x 0.750 BOS Thread
28	532 13 70-40	Fuel Line
29	532 13 71-80	Spark Arrester Kit
37	532 12 34-87	Clamp Hose
42	810 04 07-00	Lock Washer Hvy. 7/16
45	873 51 04-00	Nut Keps Hex 1/4-20 unc
62	532 43 40-17	Shield Heat
69	532 16 53-91	Gasket
70	581 88 11-01	Exhaust Tube LH
71	581 88 10-01	Exhaust Tube RH
79	532 18 39-06	Screw Socket HD 5/16-18 x 1
84	817 06 06-20	Screw 3/8-16 x 1-1/4
85	532 17 39-37	Bolt Hex 7/16-20 x 4 x Gr. 5-1.5 Thr
87	532 17 18-77	Bolt 5/16-18 unc x 3/4 w/Sems.
90	817 00 06-16	Screw 3/8-16 x 1
96	819 09 14-16	Washer 9/32 x 7/8 x 16 Ga.
97	817 67 04-12	Screw 1/4-20 x 3/4
102	817 06 05-16	Screw 5/16-18 x 1
108	532 42 30-41	Cover Pulley Engine
122	532 42 19-22	Extension Drain Oil

NOTE: All component dimensions given in U.S. inches
1 inch = 25.4 mm

Engine Power Rating Information

The gross power rating for individual gas engine models is labeled in accordance with SAE (Society of Automotive Engineers) code J1940 (Small Engine Power & Torque Rating Procedure), and rating performance has been obtained and corrected in accordance with SAE J1995 (Revision 2002-05). Torque values are derived at 3060 RPM; horsepower values are derived at 3600 RPM. Actual gross engine power will be lower and is affected by, among other things, ambient operating conditions and engine-to-engine variability. Given both the wide array of products on which engines are placed and the variety of environmental issues applicable to operating the equipment, the gas engine will not develop the rated gross power when used in a given piece of power equipment (actual “on-site” or net power). This difference is due to a variety of factors including, but not limited to, accessories (air cleaner, exhaust, charging, cooling, carburetor, fuel pump, etc.), application limitations, ambient operating conditions (temperature, humidity, altitude), and engine-to-engine variability. Due to manufacturing and capacity limitations, Briggs & Stratton may substitute an engine of higher rated power for this Series engine.

TRACTOR - MODEL NO. LT2316CMA2 (96051002200), PRODUCT NO. 960 51 00-22
STEERING ASSEMBLY **41**



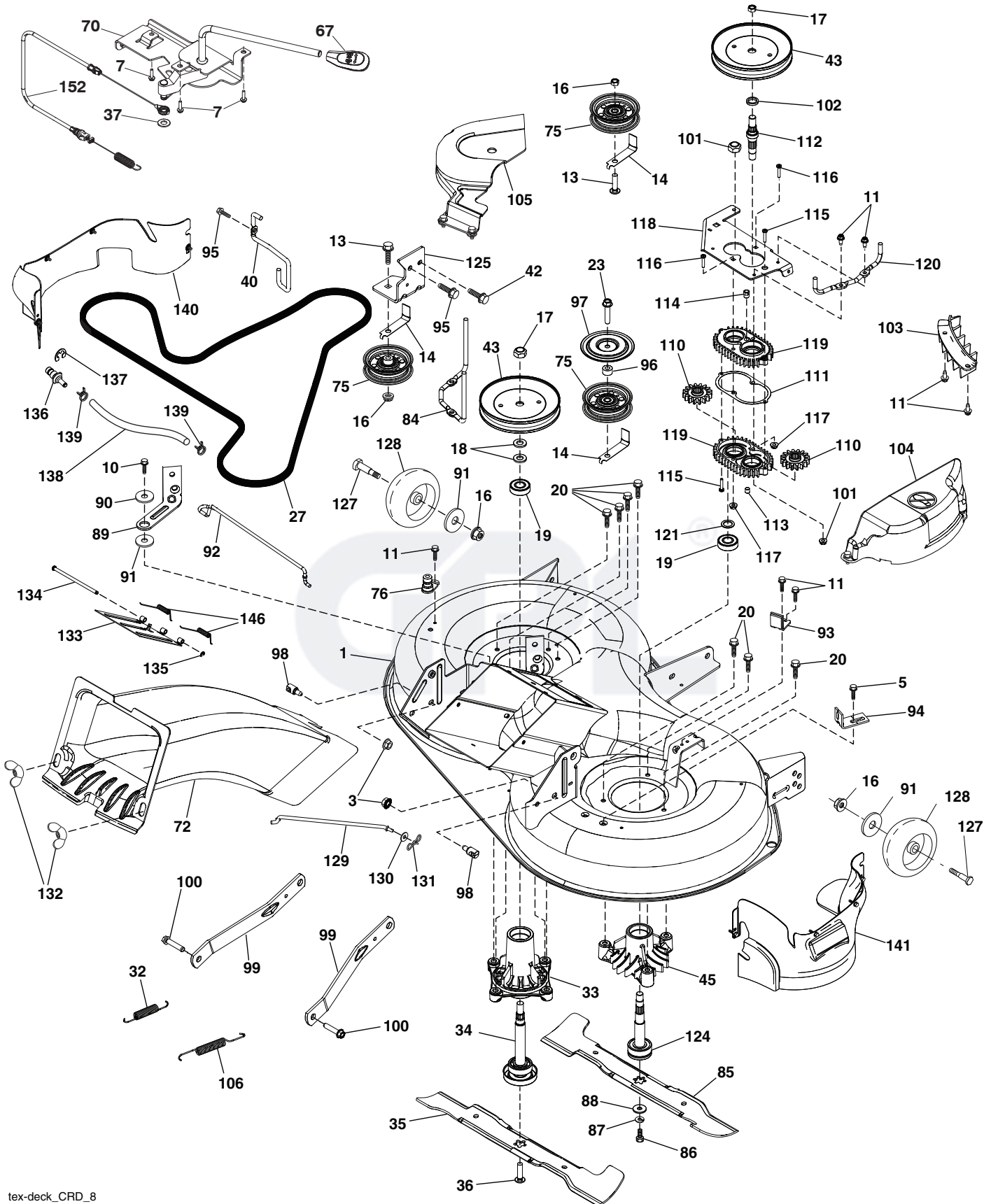
steering-tex_HUSQSR_26

**TRACTOR - MODEL NO. LT2316CMA2 (96051002200), PRODUCT NO. 960 51 00-22
STEERING ASSEMBLY 41**

KEY NO.	PART NO.	DESCRIPTION
1	532 19 46-37	Wheel, Steering Husq SR
2	532 19 59-68	Axle Asm., Front
4	532 40 30-87	Spindle Asm., LH
5	532 40 30-88	Spindle Asm., RH
6	532 12 49-31	Bearing, Race Thrust Hardened
7	532 12 17-48	Washer 25/32 x 1-5/8 x 16 Ga.
8	812 00 00-29	Ring, Clip #T5304-75
9	532 12 12-32	Cap, Spindle
13	532 12 17-49	Washer 25/32 x 1-1/4 x 16 Ga.
14	810 04 06-00	Washer, Lock Hvy. Hlcl. Spr. 3/8
15	873 54 06-00	Nut, Crown Lock 3/8-24 unf
16	532 42 93-73	Shaft Steering
19	532 19 47-29	Plate Steering
20	532 41 12-91	Boot, Steering
21	532 18 67-37	Adapter, Wheel Steering
22	532 42 05-37	Supt., Strg. Lower
26	532 19 46-03	Insert, Wheel Steering Husq SR
28	817 00 06-12	Screw 3/8-16 x 3/4
33	810 04 05-00	Washer Lock 5/16
35	532 19 47-32	Gear, Sector Plate
45	819 11 38-12	Washer 11/32 x 3/8 x 12 Ga.
53	532 18 89-67	Washer Hardened .793 x 1.637 x .060
57	532 40 74-65	Bracket Upstop
58	532 19 47-47	Bolt Shoulder Sector Pivot CFM
59	532 19 47-48	Washer Thrust Sector Steering
60	873 97 10-00	Nut Flange Lock 5/8-11
61	532 19 47-40	Draglink, LH
62	532 19 47-41	Draglink, RH
63	817 00 05-12	Screw 5/16-18 x 3/4
64	532 19 98-49	Retainer Clip Spring Steering
66	871 02 07-48	Bolt Hex Fghd. 7/16-14 x 3 Serr.
67	532 19 47-37	Bushing PM Front Axle
68	873 90 07-00	Nut Lock Flange 7/16-14 Gr. 5
69	532 19 91-62	Washer 1.5 x .505 x .118
70	532 19 61-97	Bracket Deck Susp. Front
71	532 19 07-52	Shaft Extension Steering
72	532 42 89-82	Bolt Fin Hx 5/16-18 x 4 w/Patch

NOTE: All component dimensions given in U.S. inches
1 inch = 25.4 mm

TRACTOR - MODEL NO. LT2316CMA2 (96051002200), PRODUCT NO. 960 51 00-22
MOWER DECK 44



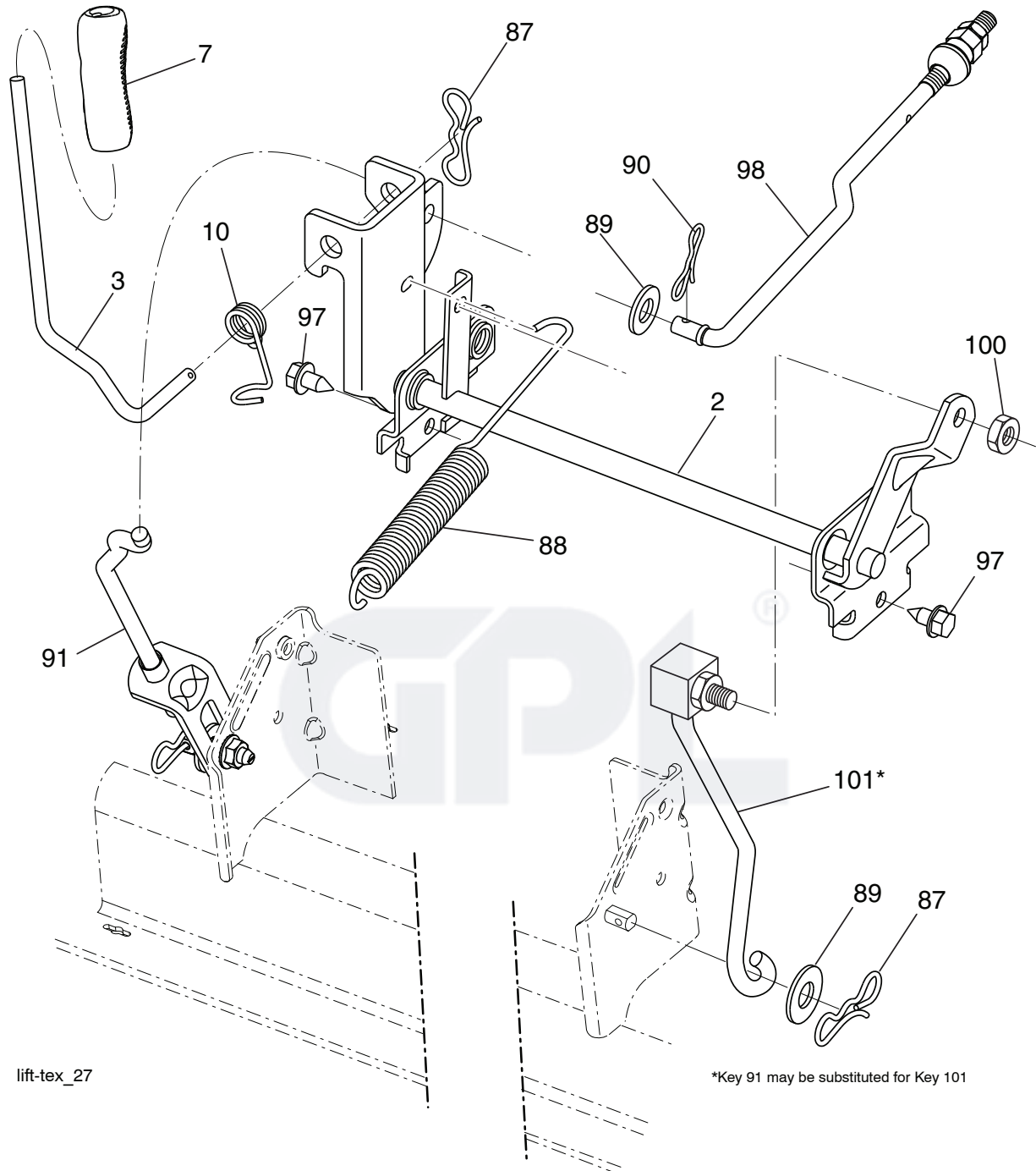
tex-deck_CRD_8

**TRACTOR - MODEL NO. LT2316CMA2 (96051002200), PRODUCT NO. 960 51 00-22
MOWER DECK 44**

KEY NO.	PART NO.	DESCRIPTION	KEY NO.	PART NO.	DESCRIPTION
1	532 43 80-52	Deck Weldment	101	873 68 09-00	Nut Crownlock 9/16 - 18 unc
3	873 90 05-00	Nut Lock Hex Flange 5/16 - 18	102	532 40 25-11	Spacer Bearing Swing Plate
5	817 00 05-10	Bolt 5/16-18	103	532 43 69-92	Guard Front Vent
7	532 41 63-58	Screw #10 x 0.750 BOS Thread	104	532 44 14-79	Mandrel Cover RH
10	817 00 06-16	Screw 3/8-16x1 smgml tap	105	532 44 14-78	Mandrel Cover LH
11	532 13 77-29	Screw Thd Roll 1/4 - 20 X 5/8	106	532 19 32-16	Spring Brake Return
13	872 11 06-12	Bolt Carr Sh 3/8 - 16 X 1 - 1/2 Gr. 5	110	532 41 53-56	Gear Output
14	532 15 60-85	Keeper Belt Idler	111	532 43 69-79	Gasket Gearcase
16	873 90 06-00	Nut Lock FIG 3/8 - 16 unc	112	532 43 69-88	Shaft Gearcase
17	532 40 02-34	Nut Flange Lock Top	113	532 43 85-33	Plug Oil
18	532 18 76-90	Washer Spacer Mandrel	114	532 43 85-34	Valve Relief
19	532 11 04-85	Bearing Ball Mandrel	115	818 03 10-16	Screw Torx #10-24 x 1
20	532 17 39-84	Screw Thread Roll	116	872 11 04-14	Bolt 1/4-20 x 1.75 Gr. 5
23	817 49 06-28	Screw Thdrol 3/8 - 16 X 1-3/4	117	873 90 04-00	Nut Hex Flange 1/4-20 unc
27	532 43 97-26	V-Belt Drive	118	532 43 69-89	Arm Clutching
32	532 40 18-72	Spring Return Deck	119	532 43 81-66	Gearcase Subasm
33	532 18 72-81	Housing Mandrel 4pt Service	120	532 43 69-91	Keeper Belt RH
34	532 19 28-72	Shaft Asm Mndrl N/Greaseable38	121	532 43 69-85	Washer
35	532 42 79-84	Blade Mower LH	124	532 43 69-86	Non Greasable Mandrel Shaft
36	532 19 30-03	Bolt/Washer Asm 7/16 - 20 unf	125	532 44 04-20	Bracket Idler Chasses
37	819 13 13-16	Washer 13/32 x 13/16 x 16 Ga.	127	532 19 34-06	Bolt Shoulder 3/8-16 x 3-5/8 Gr. 5
40	532 19 72-58	Keeper Belt Engine LH	128	532 17 48-73	Wheel Guage
42	817 00 05-12	Screw 5/16-18 x 3/4	129	532 40 48-51	Rod Anti-Sway
43	532 19 74-73	Pulley Mandrel	130	819 13 13-12	Washer 13/32 x 13/16 x 12 Ga.
45	532 13 71-52	Housing Mandrel	131	532 19 42-08	Pin Cotter 5/16 Bow Tie Lock
67	532 40 30-12	Handle Clutch Cable	132	532 17 88-99	Knob Handle
70	532 19 83-32	Clutch Asm Manual LT Pred	133	532 43 55-38	Door Mulch
72	532 43 66-58	Chute Upper	134	532 43 58-61	Pin Hinge
75	532 13 14-94	Pulley Idler Flat	135	532 43 79-88	E-Ring 5/16
76	532 43 96-40	Washout Port	136	532 43 96-39	Washout Port Remote Hookup
84	532 43 25-20	Keeper Belt LH Mandrel	137	812 00 00-29	Ring Clip #T5304-75
85	532 42 79-85	Blade Mower RH	138	532 44 07-43	Hose 3/8 Long 12"
86	532 18 17-13	Bolt 3/8-24 x 1.50 Gr. 8	139	532 44 07-42	Hose 3/8 Clamp
87	810 03 06-00	Washer Lock Hvy 3/8	140	532 43 94-73	Guard Asm LH
88	532 14 02-96	Washer Hard Blade Mower Vented	141	532 44 85-29	Guard Asm RH
89	532 43 81-24	Arm Brake 97 LH	146	532 43 99-28	Spring
90	532 19 90-92	Spacer Retainer	152	532 44 04-88	Cable Clutch Manual w/Spring
91	819 13 20-12	Washer 13/32 x 1-1/4 x 12 Ga.	--	532 19 28-70	Mandrel Assembly (Includes Housing, Shaft Assembly, And Bearing Only - Pulley/Nut/Washer And Blade Bolt/Washers Not Included)
92	532 43 69-93	Rod Brake	--	532 44 20-93	Replacement Mower Complete
93	532 43 81-25	Arm Brake RH			
94	532 19 72-50	Bracket Clutch Cable			
95	817 00 06-12	Screw 3/8-16 x 3/4			
96	532 40 02-71	Spacer			
97	532 18 20-61	Shield Idler Mower			
98	532 19 51-61	Stud Fastener			
99	532 19 51-86	Arm Suspension Mower Rear			
100	532 19 65-39	Bolt Shoulder			

NOTE: All component dimensions given in U.S. inches
1 inch = 25.4 mm

TRACTOR - MODEL NO. LT2316CMA2 (96051002200), PRODUCT NO. 960 51 00-22
MOWER LIFT 45



lift-tex_27

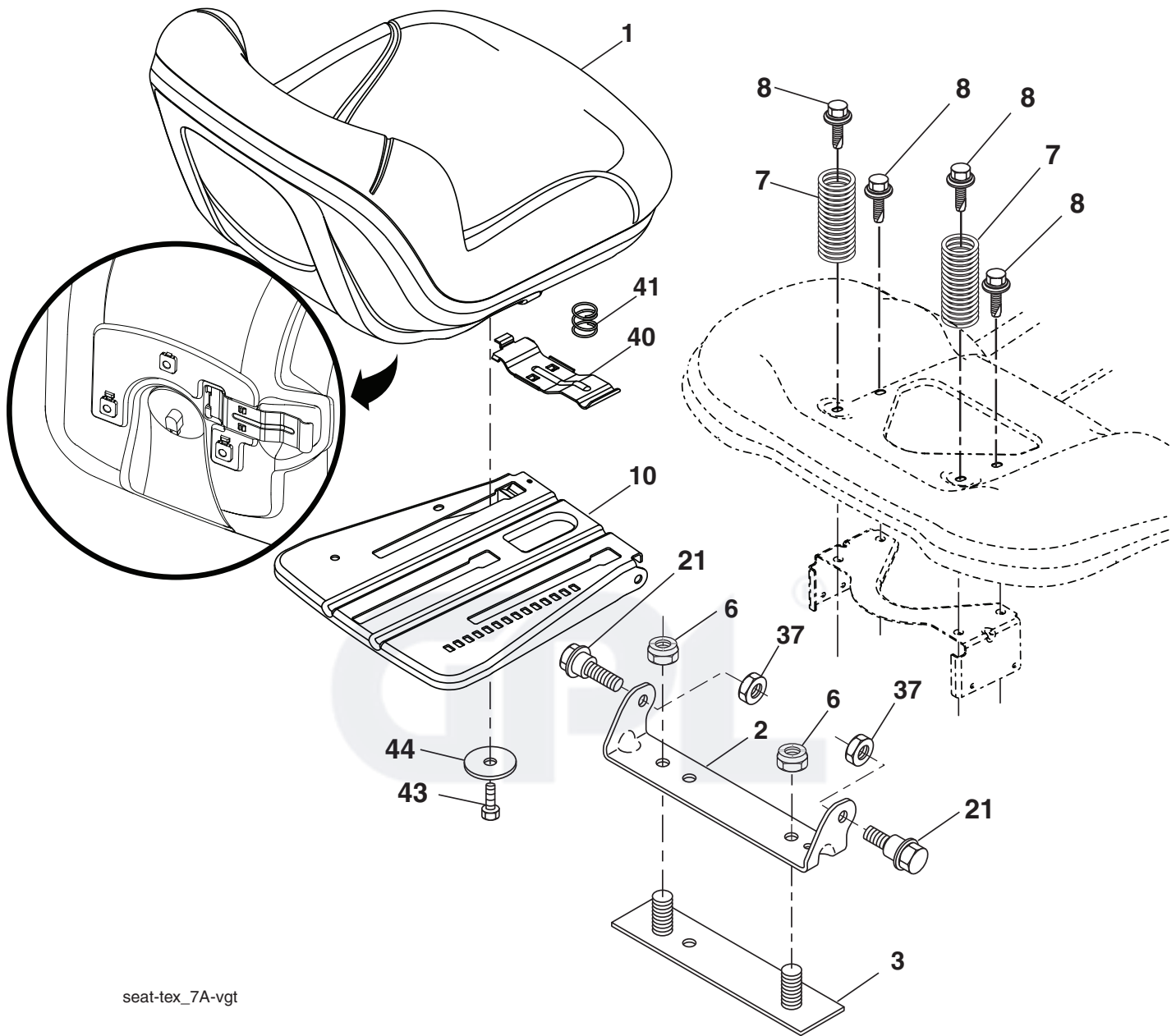
*Key 91 may be substituted for Key 101

KEY NO.	PART NO.	DESCRIPTION
2	532 43 69-96	Deck Lift Weldment
3	532 19 52-31	Lever Asm., Lift RH
7	532 41 15-55	Grip, Lever
10	532 19 63-14	Spring Torsion
87	532 19 42-09	Pin Cotter 7/16 Bow Tie Lock
88	532 43 69-95	Spring Lift Assist
89	819 19 19-12	Washer Clear Zinc
90	532 19 42-08	Pin Cotter 5/16 Bow Tie Lock

KEY NO.	PART NO.	DESCRIPTION
91	532 19 51-81	Link Lift Susp. Mower Rear
97	817 49 06-08	Screw 3/8-16 x 1/2
98	532 19 52-70	Link Lift Susp. Front Mower
100	873 93 06-00	Nut Centerlock 3/8-16
101	532 40-70-03	Link Asm. Lift FXD

NOTE: All component dimensions given in U.S. inches
 1 inch = 25.4 mm

**TRACTOR - MODEL NO. LT2316CMA2 (96051002200), PRODUCT NO. 960 51 00-22
SEAT ASSEMBLY 42**



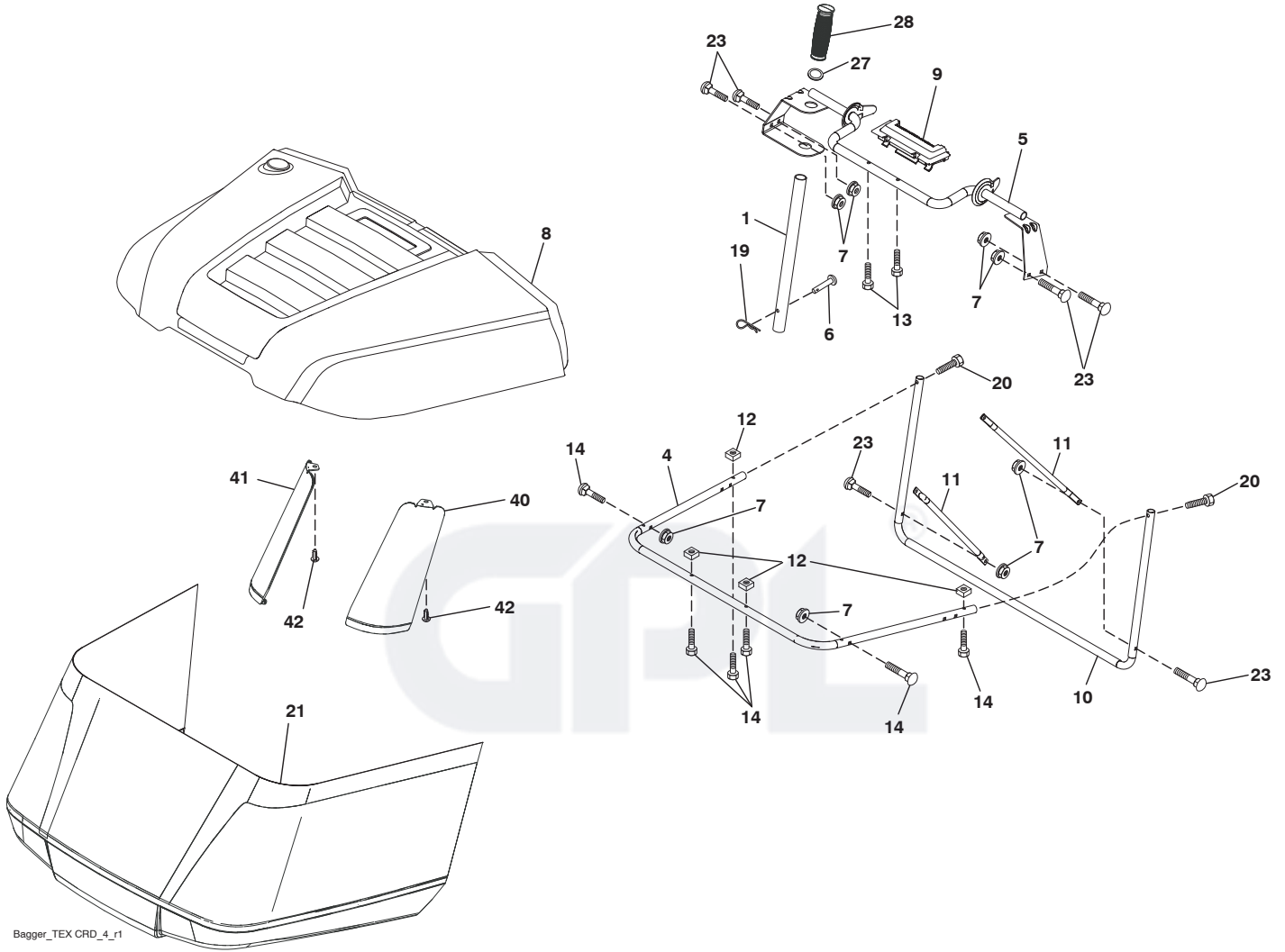
seat-tex_7A-vgt

KEY NO.	PART NO.	DESCRIPTION
1	532 40 66-25	Seat
2	532 18 01-66	Bracket Pivot Fender
3	532 14 06-75	Strap, Asm Fender
6	873 80 06-00	Nut, Lock w/Ins. 3/8-16 unc
7	532 12 41-81	Spring, Seat Cprsn
8	532 17 18-77	Bolt 5/16-18 unc x 3/4 w/Sems
10	532 19 69-77	Pan, Seat
21	532 17 18-52	Bolt, Shoulder 5/16-18

KEY NO.	PART NO.	DESCRIPTION
37	873 80 05-00	Nut, Lock 5/16-18 unc
40	532 19 76-61	Handle Slide Seat
41	532 19 82-00	Spring Latch Seat
43	874 76 06-12	Bolt 3/8-16 x 3/4
44	819 13 38-12	Washer 13/32 x 2-3/8 x 12 Ga.

NOTE: All component dimensions given in U.S. inches
1 inch = 25.4 mm

TRACTOR - MODEL NO. LT2316CMA2 (96051002200), PRODUCT NO. 960 51 00-22
BAGGER **46**



Bagger_TEX CRD_4_r1

**TRACTOR - MODEL NO. LT2316CMA2 (96051002200), PRODUCT NO. 960 51 00-22
BAGGER 46**

KEY NO.	PART NO.	DESCRIPTION
1	532 42 86-10	Tube Handle Bagger
4	532 43 96-12	Frame Asm Bagger Top
5	532 41 76-32	Frame Asm Top Bagger
6	532 12 68-75	Rivet Drilled
7	873 90 04-00	Nut Hex Flange 1/4-20 unc
8	532 42 59-54	Cover Bagger
9	532 41 76-29	Insert Handle Bagger
10	532 43 67-70	Frame Front
11	532 43 67-71	Tubing Brace Bagger
12	532 42 17-93	Nut Square 1/4
13	532 42 17-80	Screw 1/4 x 1.150
14	532 42 18-00	Bolt Shoulder 1/2 x 1.150
19	532 19 42-08	Cotter Pin 5/16 Bow Tie
20	585 36 88-01	Screw Hex Cap 1/4-20 x 1.375
21	532 43 70-06	Bag Asm
23	872 04 04-10	Bolt Carr. 1/4-20
27	532 42 12-62	Grommet Rubber
28	532 16 57-87	Grip Handle Black
40	532 43 94-18	Support Bagger Corner RH
41	532 43 94-35	Support Bagger Corner LH
42	532 44 04-28	Christmas Tree Clip

NOTE: All component dimensions given in U.S. inches
1 inch = 25.4 mm

GPL[®]